



**Noise Monitoring Result**

**Day Time (0700 - 1900hrs on normal weekdays)**

Location: M1a - Harbour Road Sports Centre

| Date                  | Time  | Weather | Measurement Noise Level |      |      | Baseline Level | Construction Noise Level | Limit Level |
|-----------------------|-------|---------|-------------------------|------|------|----------------|--------------------------|-------------|
|                       |       |         | Leq                     | L10  | L90  | Leq            | Leq                      | Leq         |
| Unit: dB(A), (30-min) |       |         |                         |      |      |                |                          |             |
| 03/06/14              | 13:08 | Fine    | 72.9                    | 75.5 | 68.5 | 72             | 65                       | 75          |
| 09/06/14              | 15:25 | Fine    | 71.6                    | 73.5 | 67.0 | 72             | 72                       | 75          |
| 17/06/14              | 09:41 | Fine    | 73.8                    | 76.0 | 68.5 | 72             | 69                       | 75          |
| 25/6/2014             | 14:17 | Cloudy  | 72.9                    | 75.5 | 67.5 | 72             | 65                       | 75          |

Location: M2b - Noon-day gun area

| Date                  | Time  | Weather | Measurement Noise Level |      |      | Baseline Level | Construction Noise Level | Limit Level |
|-----------------------|-------|---------|-------------------------|------|------|----------------|--------------------------|-------------|
|                       |       |         | Leq                     | L10  | L90  | Leq            | Leq                      | Leq         |
| Unit: dB(A), (30-min) |       |         |                         |      |      |                |                          |             |
| 03/06/14              | 13:55 | Fine    | 74.5                    | 76.5 | 69.5 | 68             | 74                       | 75          |
| 09/06/14              | 16:10 | Fine    | 67.7                    | 69.0 | 65.5 | 68             | 51                       | 75          |
| 17/06/14              | 10:33 | Fine    | 70.2                    | 72.0 | 67.5 | 68             | 67                       | 75          |
| 24/06/14              | 14:42 | Fine    | 78.4                    | 82.5 | 69.5 | 68             | 78                       | 75          |

Location: M3a - Tung Lo Wan Fire Station

| Date                  | Time  | Weather | Measurement Noise Level |      |      | Baseline Level | Construction Noise Level | Limit Level |
|-----------------------|-------|---------|-------------------------|------|------|----------------|--------------------------|-------------|
|                       |       |         | Leq                     | L10  | L90  | Leq            | Leq                      | Leq         |
| Unit: dB(A), (30-min) |       |         |                         |      |      |                |                          |             |
| 03/06/14              | 14:35 | Fine    | 66.3                    | 67.5 | 64.5 | 69             | 66                       | 75          |
| 10/06/14              | 10:02 | Cloudy  | 67.6                    | 70.5 | 64.0 | 69             | 68                       | 75          |
| 17/06/14              | 11:16 | Fine    | 68.2                    | 69.5 | 66.5 | 69             | 68                       | 75          |
| 24/06/14              | 13:49 | Rainy   | 66.9                    | 68.5 | 65.0 | 69             | 67                       | 75          |

Location: M4b - Victoria Centre

| Date                 | Time  | Weather | Measurement Noise Level |      |      | Baseline Noise Level | Construction Noise Level | Limit Level |
|----------------------|-------|---------|-------------------------|------|------|----------------------|--------------------------|-------------|
|                      |       |         | Leq                     | L10  | L90  | Leq                  | Leq                      | Leq         |
| Unit: dB(A), (30min) |       |         |                         |      |      |                      |                          |             |
| 03/06/14             | 15:16 | Fine    | 69.7                    | 70.5 | 67.5 | 67                   | 66                       | 75          |
| 10/06/14             | 10:49 | Cloudy  | 69.5                    | 71.0 | 67.0 | 67                   | 65                       | 75          |
| 17/06/14             | 13:00 | Fine    | 69.7                    | 71.0 | 67.5 | 67                   | 66                       | 75          |
| 24/06/14             | 13:02 | Rainy   | 70.4                    | 72.0 | 68.0 | 67                   | 67                       | 75          |

Location: M5b - City Garden

| Date                 | Time  | Weather | Measurement Noise Level |      |      | Baseline Level | Construction Noise Level | Limit Level |
|----------------------|-------|---------|-------------------------|------|------|----------------|--------------------------|-------------|
|                      |       |         | Leq                     | L10  | L90  | Leq            | Leq                      | Leq         |
| Unit: dB(A), (30min) |       |         |                         |      |      |                |                          |             |
| 03/06/14             | 16:00 | Fine    | 72.7                    | 73.0 | 72.0 | 68             | 71                       | 75          |
| 10/06/14             | 14:44 | Fine    | 70.0                    | 71.0 | 68.5 | 68             | 66                       | 75          |
| 17/06/14             | 13:52 | Fine    | 69.8                    | 70.5 | 68.0 | 68             | 65                       | 75          |
| 24/06/14             | 10:14 | Fine    | 71.2                    | 72.5 | 69.0 | 68             | 68                       | 75          |

Location: M6 - HK Baptist Church Henrietta Secondary School

| Date                  | Time  | Weather | Measurement Noise Level |      |      | Baseline Level | Construction Noise Level | Limit Level |
|-----------------------|-------|---------|-------------------------|------|------|----------------|--------------------------|-------------|
|                       |       |         | Leq                     | L10  | L90  | Leq            | Leq                      | Leq         |
| Unit: dB(A), (30-min) |       |         |                         |      |      |                |                          |             |
| 05/06/14              | 16:35 | Cloudy  | 73.2                    | 74.0 | 71.5 | 71             | 70                       | 65          |
| 10/06/14              | 15:24 | Fine    | 73.6                    | 74.5 | 72.0 | 71             | 70                       | 65          |
| 17/06/14              | 14:32 | Fine    | 74.2                    | 75.5 | 72.0 | 71             | 72                       | 70          |
| 25/06/14              | 15:26 | Cloudy  | 73.6                    | 75.5 | 70.0 | 71             | 70                       | 65          |



### Noise Monitoring Result

#### Day Time (0700 - 1900hrs on normal weekdays)

Location: M7e - International Finance Centre (Eastern End of Podium) (Reference Station)

| Date                  | Time  | Weather | Measurement Noise Level |      |      | Baseline Level | Construction Noise Level | Limit Level |
|-----------------------|-------|---------|-------------------------|------|------|----------------|--------------------------|-------------|
|                       |       |         | Leq                     | L10  | L90  | Leq            | Leq                      | Leq         |
| Unit: dB(A), (30-min) |       |         |                         |      |      |                |                          |             |
| 05/06/14              | 14:02 | Fine    | 65.8                    | 67.0 | 63.5 | 67             | 66                       | N/A         |
| 09/06/14              | 13:50 | Fine    | 76.9                    | 79.5 | 67.5 | 67             | 76                       | N/A         |
| 19/06/14              | 14:44 | Fine    | 74.7                    | 78.0 | 65.5 | 67             | 74                       | N/A         |
| 25/06/14              | 11:14 | Cloudy  | 66.8                    | 68.5 | 63.5 | 67             | 67                       | N/A         |

Location: M7w - International Finance Centre (Western End of Podium)

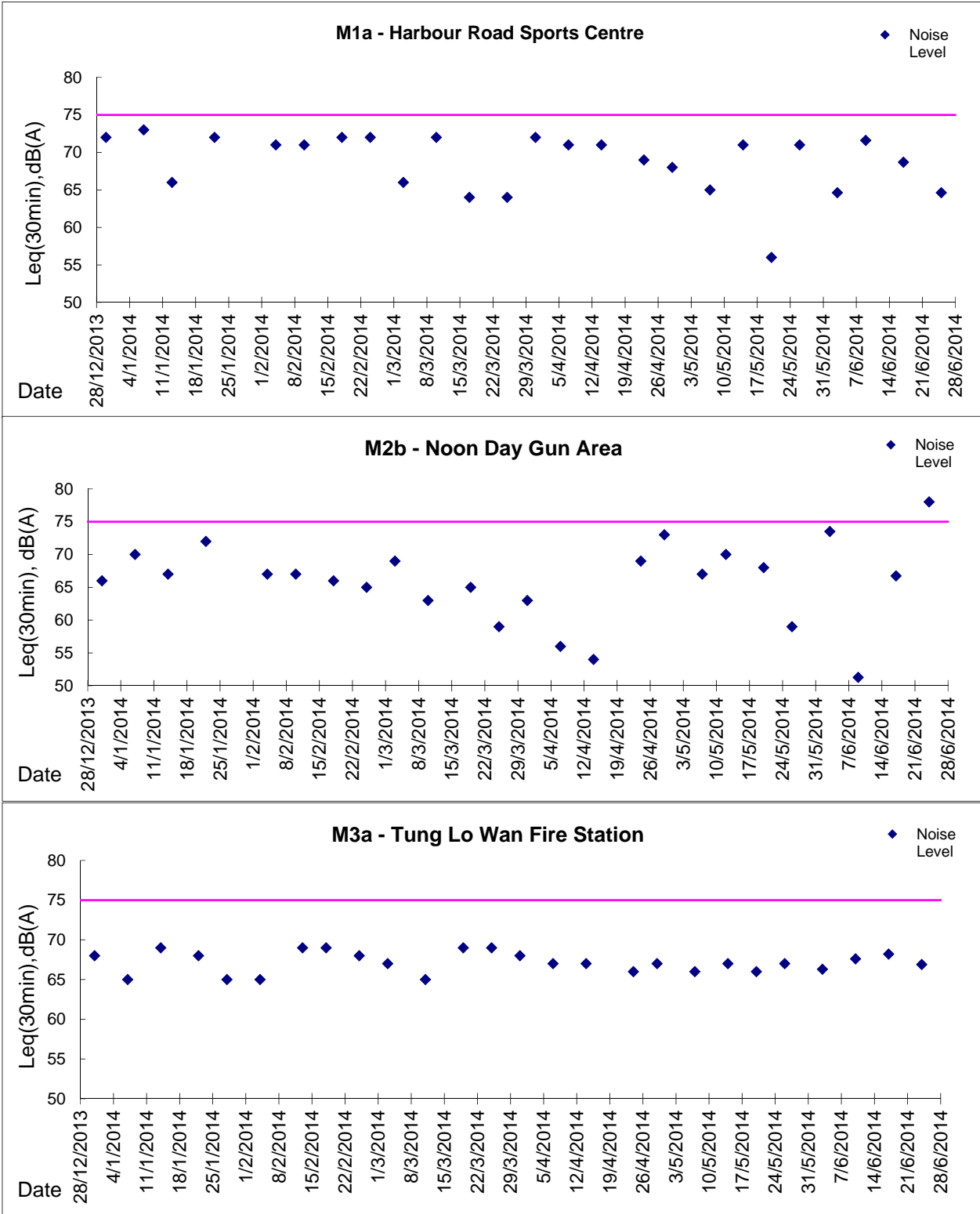
| Date                  | Time  | Weather | Measurement Noise Level |      |      | Baseline Level | Construction Noise Level | Limit Level |
|-----------------------|-------|---------|-------------------------|------|------|----------------|--------------------------|-------------|
|                       |       |         | Leq                     | L10  | L90  | Leq            | Leq                      | Leq         |
| Unit: dB(A), (30-min) |       |         |                         |      |      |                |                          |             |
| 05/06/14              | 14:40 | Fine    | 68.0                    | 68.6 | 63.0 | 69             | 68                       | 75          |
| 09/06/14              | 13:20 | Fine    | 67.0                    | 69.0 | 63.5 | 69             | 67                       | 75          |
| 19/06/14              | 14:09 | Fine    | 66.4                    | 68.0 | 64.0 | 69             | 66                       | 75          |
| 25/06/14              | 9:43  | Fine    | 77.8                    | 83.5 | 64.5 | 69             | 77                       | 75          |

Location: M8 - City Hall

| Date                  | Time  | Weather | Measurement Noise Level |      |      | Baseline Level | Construction Noise Level | Limit Level |
|-----------------------|-------|---------|-------------------------|------|------|----------------|--------------------------|-------------|
|                       |       |         | Leq                     | L10  | L90  | Leq            | Leq                      | Leq         |
| Unit: dB(A), (30-min) |       |         |                         |      |      |                |                          |             |
| 05/06/14              | 15:32 | Cloudy  | 59.7                    | 61.5 | 57.0 | 64             | 60                       | 70          |
| 09/06/14              | 14:40 | Fine    | 60.0                    | 62.0 | 57.0 | 64             | 60                       | 70          |
| 17/06/14              | 16:16 | Fine    | 60.4                    | 62.5 | 57.0 | 64             | 60                       | 70          |
| 25/06/14              | 13:04 | Cloudy  | 62.8                    | 64.5 | 57.5 | 64             | 63                       | 70          |



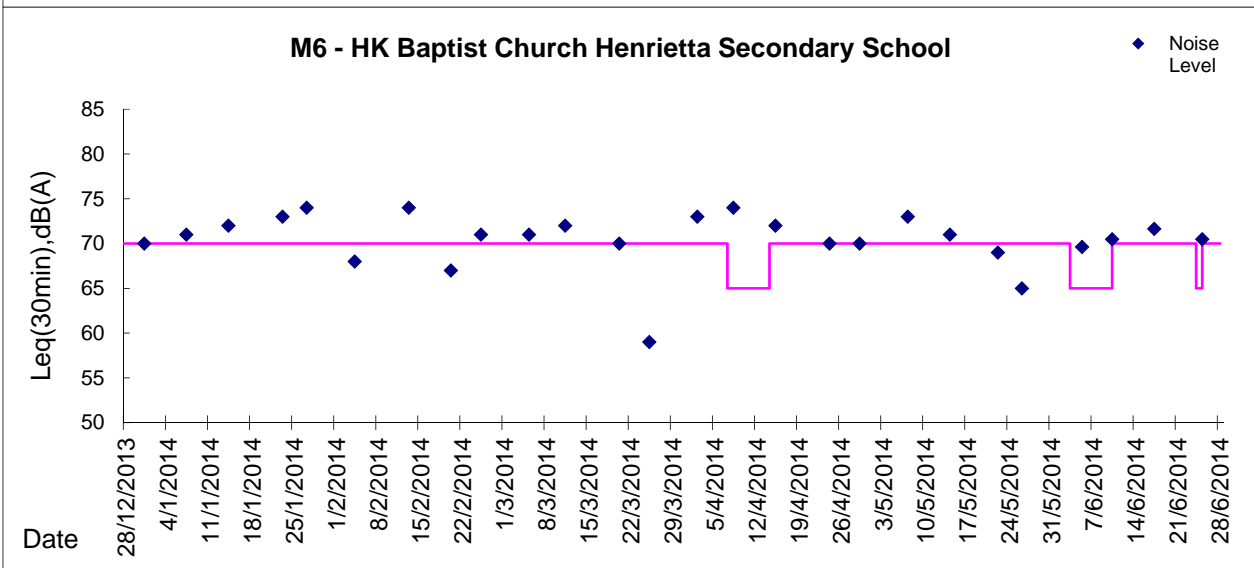
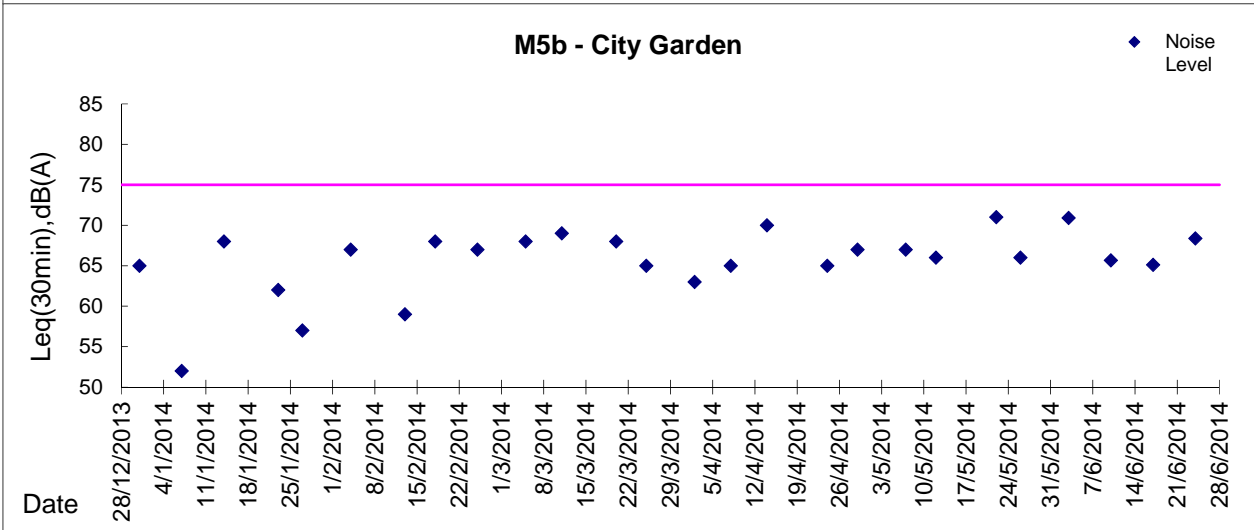
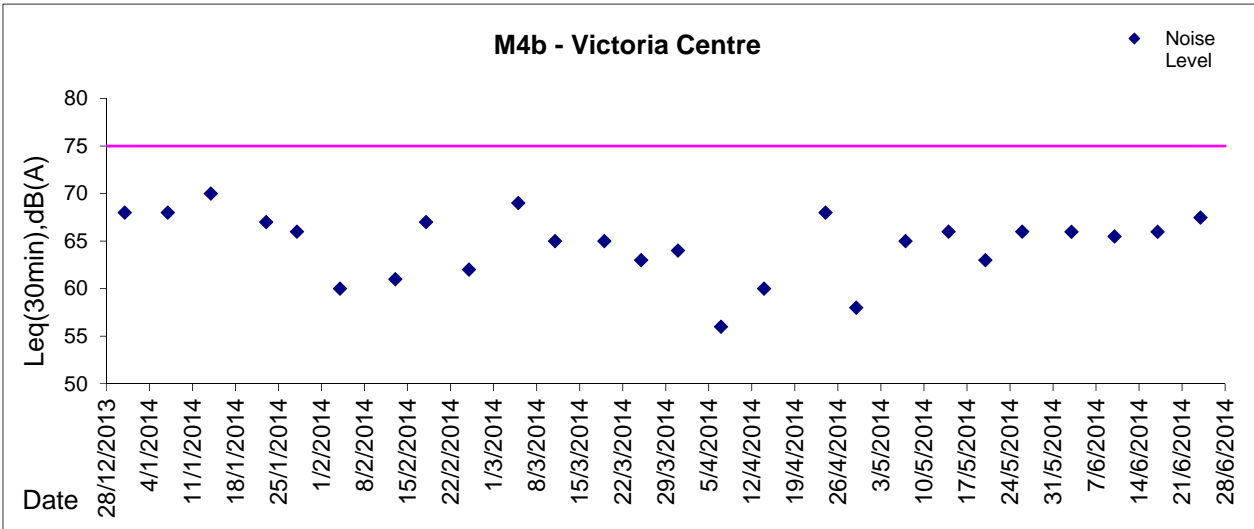
**Graphic Presentation of Noise Monitoring Result**  
**Day Time (0700 - 1900hrs on normal weekdays)**





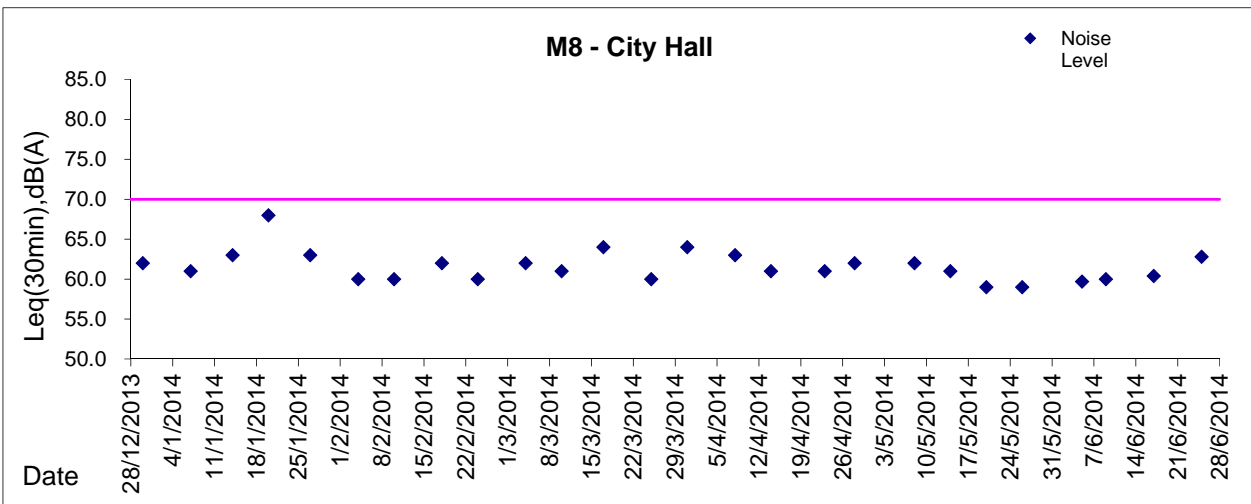
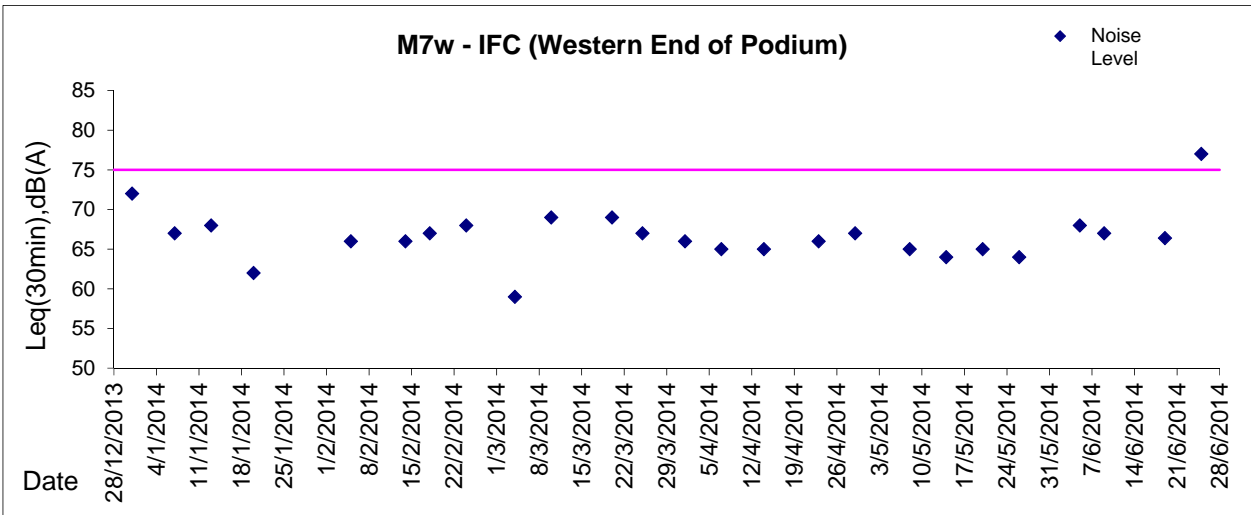
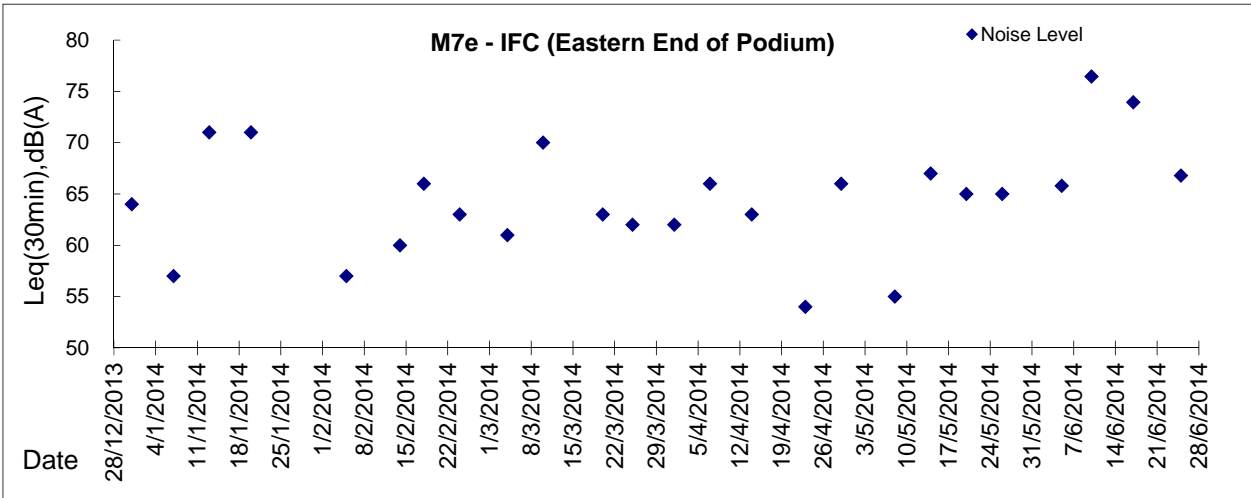
**Graphic Presentation of Noise Monitoring Result**

**Day Time (0700 - 1900hrs on normal weekdays)**





**Graphic Presentation of Noise Monitoring Result**  
**Day Time (0700 - 1900hrs on normal weekdays)**



\* Remark: M7e - IFC (Eastern End of Podium) is a reference monitoring station